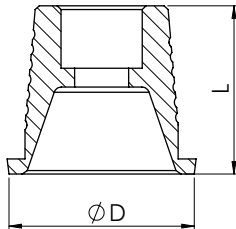





CAD/CAM COMPONENTS | TI-BASES FOR MULTI-UNIT



DESIGN FEATURES	<p>Ti-Bases provide a connection for customized digital restorations. The Ti-Base is cemented to the prosthetic ensuring suitable connection to the implant/multi-unit.</p> <ul style="list-style-type: none"> • Only for screw retained restorations • Large bonding surface for stability and reliable adhesion
MATERIAL	Titanium Alloy (Ti-6Al-4V ELI)

ORDERING INFORMATION

Multi-Unit Titanium Base	Ø D (mm)	L (mm)	Ref. No
	4.9	4.5	NM-C7124
Multi-Unit Titanium Base for Immediate Loading	Ø D (mm)	L (mm)	Ref. No
	5.2	4.5	NM-C7126
	Included with all abutments		Ref. No NM-S7102



Noris Medical's CAD/CAM libraries are available for the following software: Exocad, 3Shape and Dental Wings. The most current libraries can be found in Noris Medical's website.

exocad

3shape

dental wings