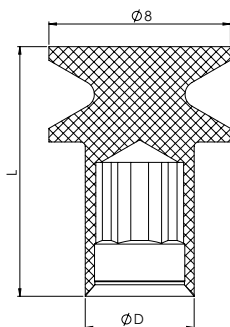
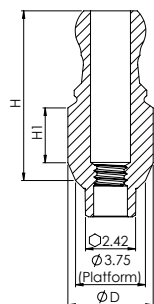








ACCESSORIES | SNAP-ON TRANSFER




DESIGN FEATURES	<ul style="list-style-type: none"> • Snap-on cap that snaps on transfer body that screws in to the implant • Designed for impressions using the closed-tray technique, in conjunction with cap T4402 • Transfer body gold color anodization
CLINICAL BENEFITS	<ul style="list-style-type: none"> • Enables closed tray impression transfer • Advantageous in limited opening situations • Transfer body can be used as esthetic abutments
MATERIAL	Body & Screw: Titanium Alloy (Ti-6Al-4V ELI) Snap-On Cap: Derlin

ORDERING INFORMATION



Transfer	Ø D (mm)	L1 (mm)
 NM-T3802	4.8	2
 NM-T3803	4.8	3
 NM-T3804	4.8	4
 NM-T3805	4.8	5
 NM-T3806	4.8	6
 NM-S8324	Included with all abutments above & available separately	

Snap-On Cap for Ball Transfer		
Cap	Ø D (mm)	L (mm)
 NM-T4402	4.8	11

